

Description

The KMC MCP-5160 Series 6" pneumatic damper actuators, with die-cast aluminum bodies, are designed to position large automatic air control dampers. The MCP-5160 Series feature a universal mounting bracket for connecting to dampers, butterfly valves, and variable fan inlet vanes.

The MCP-5160 has an 8 to 13 psi main spring for ample return power. The linkage is designed for angular adjustment from 60° to 120° of the damper rotation at full stroke. The units may be used for modulating or two-position applications.

NOTE: For 6-inch pneumatic actuators with bodies made of glass-filled nylon, see the MCP-1160 series.

Features

- ◆ Allows modulating or two position applications
- ◆ Universal mounting bracket
- ◆ Ample return power from 8 to 13 psi main spring

Accessories/Replacement Parts

HLO-1001	Replacement clevis
HLO-1002	Replacement crank arm assembly
HMO-1001	Replacement rear strap for rear swivel mounting
VTD-1500*	Positioner feedback arm
VTD-2256*	5 psi span spring for CMC-1002
VTD-2266*	10 psi span spring for CMC-1002
VTD-5002	Entire front end linkage (6" x 6")
VTD-5003	Nut, bolt, and sleeve for rear mounting
VTD-9426	Replacement actuator diaphragm

***NOTE:** Although the CMC-1002 metal positive positioner (shown in photo) has been discontinued, related replacement positioner parts remain available for now.



Mounting
Bracket

(Discontinued
CMC-1002
Positioner)

VTD-22x6 Spring
and VTD-1500 Arm

Clevis with
Crank Arm
Linkage

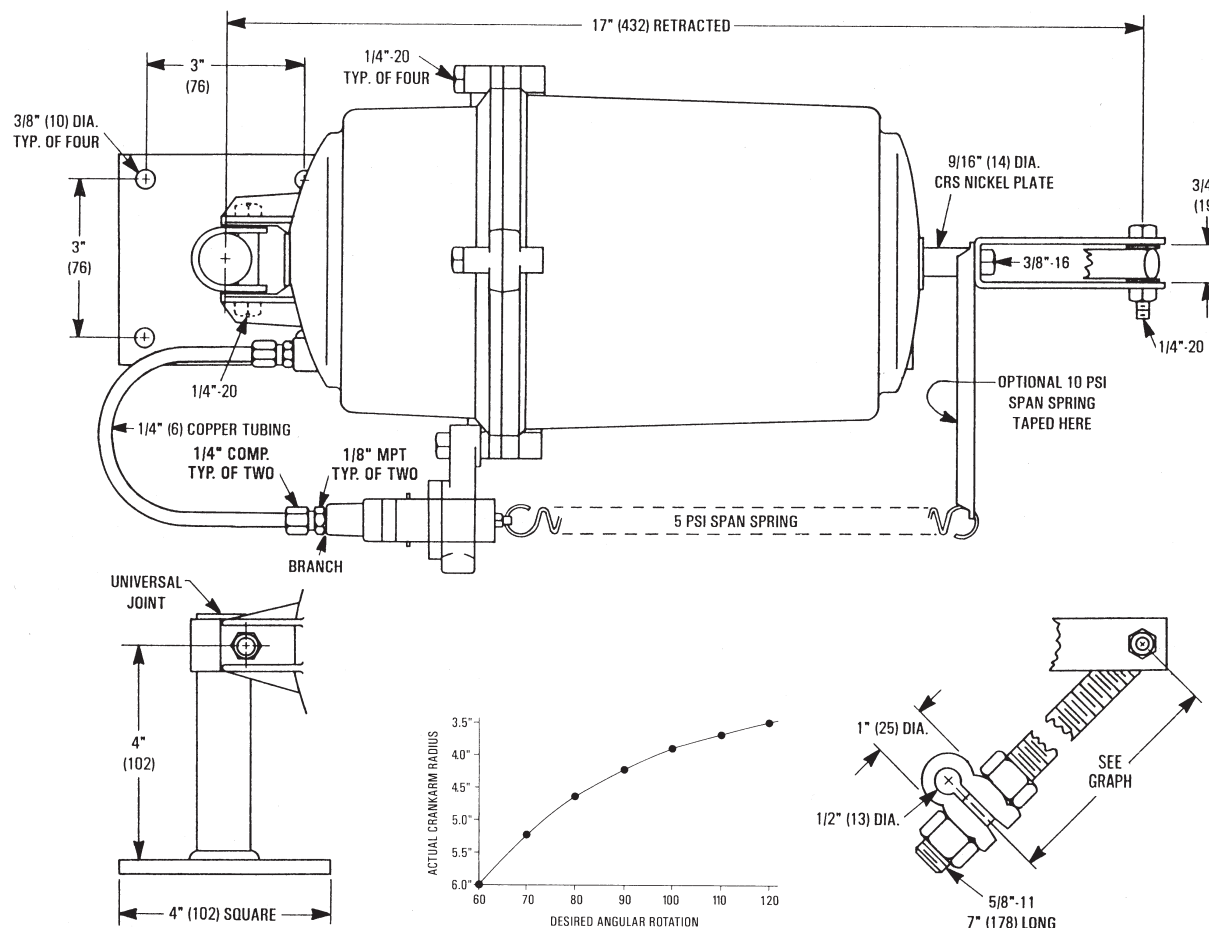
Models

	Mounting Bracket	Bracket Hardware Only	Clevis Linkage Only	Clevis with Crank Arm Linkage
MCP-5160-5020			•	
MCP-5160-5101	•			
MCP-5160-5102				•
MCP-5160-5103		•		
MCP-5160-5111	•		•	
MCP-5160-5114	•			•

NOTE: "Bracket Hardware Only" option includes a bolt, nut, sleeve, and strap. "Mounting Bracket" option also includes a mounting post (flange).

⚠ CAUTION

Pneumatic devices must be supplied with clean, dry control air. Any other medium (e.g., oil or moisture contamination) will cause the device to fail.



Specifications

Effective Area	24.8 sq. inches (160 sq. cm)
Stroke	6" (152 mm)
Supply Pressure	0 to 20 psi (138 kPa) operating 30 psi (207 kPa) maximum (see note under Temperature Limits)
Spring Ranges	8–13 psi (55–90 kPa)
Retracted/Extended Torque	576/504 in-lbs. (65/57 N•m) @ 90° (based on 0 and 20 psi applied)
Supply Connection	1/8" (3 mm) FPT, supplied with brass compression fitting for 1/4" (6 mm) OD tubing

Material

Body	Die-cast aluminum
Diaphragm	Neoprene
Piston	Glass-filled nylon
Shaft	CRS with nickel plating

Damper Rating @ 1000 fpm

Gradual	75 sq. ft (7 sq. m)
Two position	90 sq. ft. (8.36 sq. m)

Weight

12.75 lbs. (6 kg)

Temperature Limits

Operating	–20 to 180° F (–29 to 82° C)
Shipping	–40 to 180° F (–40 to 82° C)

NOTE: If application requires operation near maximum temperature AND maximum pressure, install a tubing restraint at the actuator connection.

KMC Controls, Inc.

19476 Industrial Drive, New Paris, IN 46553

574.831.5250

www.kmccontrols.com

info@kmccontrols.com